

ABOUT THE BOEC

For over 34 years, Breckenridge Outdoor Education Center (BOEC) has provided the opportunity for adults and children with disabilities and special needs to experience the great outdoors. Last year, the BOEC served a total of 2,106 participants and over 50% of them received tuition assistance over the already subsidized fees. Last year participants came from 40 states and 7 countries to unleash their potential and experience the wonders of the outdoors in the great Rocky Mountains. BOEC's Tuition Assistance Fund enables the BOEC to reach out to all participants regardless of their circumstances or their level of ability.

The Brain Injury Association of Colorado, Mountain Mentors, The Children's Hospital, Rocky Mountain Independence for the Physically Challenged, Jefferson Center for Mental Health, along with numerous military, Summit County locals and visually impaired participants are just a sampling of the groups that benefit from the BOEC's outdoor adaptive programs.

\$125 provides a full day of outdoor programing for a special needs participant. \$500 - cost of 4-day adaptive camp for one participant.



If you are participating, make sure to bring the enclosed registration form on March 26.

- Sorry, I cannot attend but would like to make a donation of \$ _____ to help the BOEC provide adaptive outdoor adventures to those with special needs.
- I/We wish to donate by check.
(Please make check payable to the BOEC)
- I/We wish to donate by credit card.
(Circle Visa or Mastercard)

Name as it appears on card

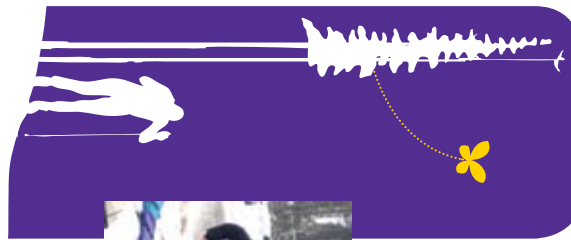
Address

Card number

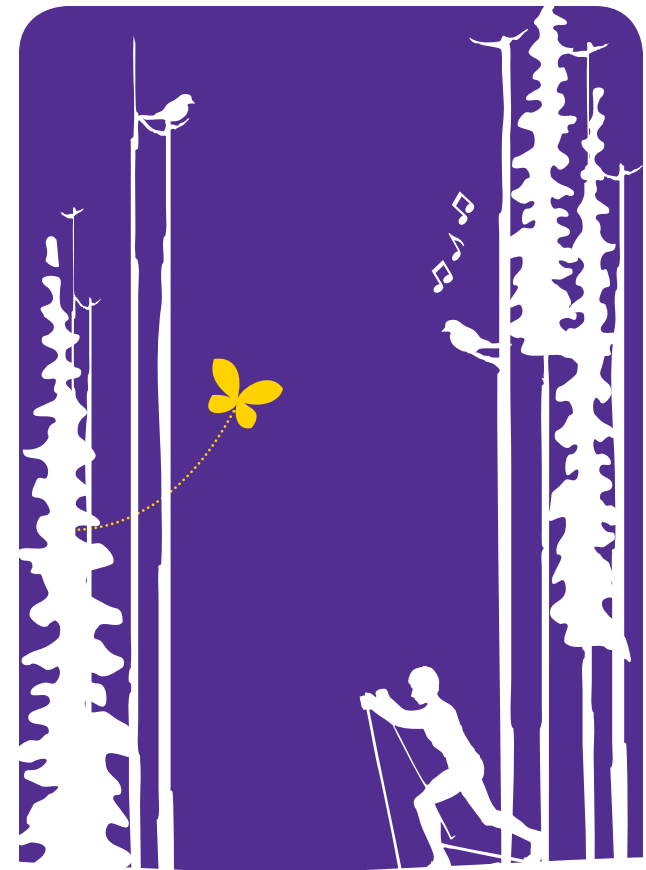
Exp. date

Signature

Mail to: **BOEC**
P.O. Box 697
Breckenridge, CO 80424



**Breckenridge
Outdoor
Education
Center**
P.O. Box 697
Breckenridge, CO 80424
www.boec.org



SATURDAY, MARCH 26, 2011
BRECKENRIDGE NORDIC CENTER

Multiple length courses on criterion loops for both teams & individuals.



BreckEBEINER
60K SKI FOR A CAUSE

NORDIC SKI-A-THON & SNOWSHOE BASH
To benefit the Breckenridge Outdoor Education Center

BRECKEBEINER 60K NORDIC SKI-A-THON & SNOWSHOE BASH

To Benefit the BOEC



DEAR NORDIC SKIER & FRIEND OF THE BOEC,

The 9th Annual Breckebeiner 60K Nordic Ski & Snowshoe Bash is set for **Saturday, March 26, 2011** at the Breckenridge Nordic Center. We are actively seeking support for the over 2,000 participants with disabilities and special needs who benefit from the adaptive outdoor adventure programs conducted by the Breckenridge Outdoor Education Center (BOEC).

We are so grateful that the BOEC exists and there is an opportunity to partner with them as a Nordic community to help raise funds and celebrate the gift of the healthy lives that we enjoy! With this goal in mind, we cordially invite you to form a team or ski solo for the Breckebeiner 60K. The Breckebeiner 60K is not a relay, so your team can ski the groomed Nordic kilometers together.



We encourage you and the business community to sign up for the Breckebeiner 60K and seek additional donations for the kilometers you ski or snowshoe. New this year, we are offering complimentary novice instruction available to those teams who commit to raising \$1,000. Why not challenge one of your friendly business competitors to see who can do the most k's or raise the most money for the BOEC? All donations are tax deductible and will benefit the BOEC's Tuition Assistance Fund.



We look forward to seeing you on March 26th. Thank you!
Gene & Therese Dayton and the fun-loving staff of Oh Be Joyful!

SCHEDULE

Criterion loops, teams and individuals.

- 7 am – 1 pm: Registration Ski/Snowshoe
- 11 am: Children's 1K Snowshoe with Treasure Hunt
- 11 am – 1 pm: Food and Beverages donated by **Vail Resorts Echo**
- 12 pm: Costume Contest and Door Prizes!

DIRECTIONS TO THE NORDIC CENTER

Take I-70 West to the Frisco/Breckenridge Exit 203. Travel South on Hwy 9 also called Summit Blvd through Frisco about 9 miles to Breckenridge. At "round-about", stay in right lane, staying on Hwy 9. Travel 6 long blocks to the 2nd stoplight and yield/turn right onto Ski Hill Road. Go up 1/2 mile and turn right at the Breckenridge Nordic Center sign.



TO GET INVOLVED CALL 970.453.6855 or BestNordicSki@gmail.com



**"No'er reason to end the season,
Without der experience no finer,
Let's send ULLR to Phoenix,
After ye ol' Breckebeiner."**

...Ol' Norwegian Proverb

THE COURSE

The Nordic course will be a criterion loop on intermediate terrain groomed for both skate and classic styles. An adaptive Nordic course will also be offered for those with special needs **Nordic ski course lengths of 6K loop series will be offered. The snowshoe course will be loop series of 3Ks for individuals and groups.** For families with youngsters there will be a 1K snowshoe loop including a treasure hunt. Rentals are available at the Nordic Center at a reduced rate for all participants. Sorry, no pets allowed.

Costumes are encouraged! There will be warm and filling food, memorable live entertainment by Helmet Fricker and Those Austrian Guys and door prizes! The top fundraiser will receive a 2011-2012 season ski pass donated by Vail Resorts Echo!

Make your own or team fundraising page at www.breckebeiner.myevent.com or invite friends to participate in the Breckebeiner 60K through the Breckenridge Outdoor Education Center's Facebook page.

Want to learn more about the BOEC?
Visit www.boec.org.

Carpooling and bus transportation encouraged!